

# Nursery Induction Evening



Welcome to Barnes Primary School



Please scan this QR  
code for information  
on preparing your  
child for Nursery!

## IMPORTANT

Please take this time to email Mrs Fincham a photo of your  
child that can be used for their peg.

[ifincham@barnes.richmond.sch.uk](mailto:ifincham@barnes.richmond.sch.uk)

# Welcome

## What we will cover this evening:

- Welcome from Sue Jepson
- Nursery Learning Environment
- Key Information about the Nursery day
- Home visits, stay and play and starting arrangements
- How you can help prepare your child for Nursery
- Uniform
- Communications
- PTFA
- JAG
- Tour of the Nursery and food tasters





# Nursery Staff



Each home group has an adult who rotates half termly. They lead home group sessions and snack time.

All adults observe and interact with all the children.



Mrs Fincham



Miss Griffiths



# The Nursery Learning Environment

- Children have access to both the **indoor** and **outdoor** 'classrooms' throughout the day. Both areas are equally important.
- Adults are in both areas, to encourage and guide children. They also work with focus children to extend their learning and carry out observations.
- We record observations on **Tapestry**. This creates an online learning journal for you child that you will get access to.



# Indoor Learning Environment

Our spacious, beautiful indoor learning area, is divided into different zones to support all areas of learning.





# Outdoor Learning Environment

We have an amazing outdoor area which provides multiple opportunities for gross motor development alongside many other skills.



# Arrival

8.45 – 8.55 am

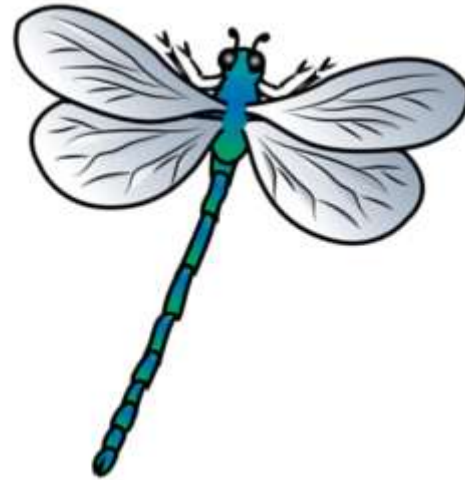


# Home Groups



Bumblebees

Dragonflies



Honeybees



Butterflies – part time



Ladybirds



# Snack Time

## Snack time focus:

- Manners
- Speaking and listening (speaking in full sentences)
- Fine motor development (peeling and pouring)
- Healthy eating and trying new food
- Storytime



# Choosing Time

What does this look like?













# Forest School

- All children will access Forest School on a regular basis.
- This provides amazing opportunities to connect with nature.
- The children LOVE Forest School.



A photograph of a wooden building with horizontal siding. A dark rectangular sign is mounted on the wall, featuring the text 'Welcome to our forest school' in a light blue, sans-serif font. In the foreground, a thin, brown, leafless branch with several small, bright yellow flowers and some green leaves extends across the frame. The building's siding is a light greyish-blue color.

Welcome to our  
forest school



# Lunchtime

- Fabulous food.
- Trying new food is really celebrated.
- An opportunity to chat and socialise with friends.
- Outside time.
- Laughter, love and learning!



# Home Time

11.50am – part time children

3.20pm – full time children



# Home Visits

- Each child will receive a home visit in **September** before starting Nursery.
- Two or three members of the Nursery Team will visit: one or two teachers and one leader of learning.
- It enables us to meet your child in a familiar setting which helps tremendously in the settling process.
- **10 minute slot**
- It is a really lovely and memorable time.
- Please try and have a **family photo** ready to give to the Teacher at your home visit.







# Stay and Play

## Barnes Bear Trail



Monday 8<sup>th</sup> September

You will be invited to one of two sessions:

9:15 – 10:15am **OR** 10:45 – 11:45

One parent only is to accompany their child



# Starting Nursery

- Lucy will be in touch in **July** with your child's start date.
- We have a **staggered process** over the course of one week. This is important as it allows the class to build up gradually, enabling the children to settle in quickly.



# Supporting your child in getting ready for Nursery

1. Get excited!
2. Toilet training.
3. Increase independence (particularly when getting dressed)
4. Read the 'Day in Nursery' book multiple times.
5. Label EVERYTHING.

## A day in Nursery



## A typical day at...

## **BARNES NURSERY**

Scan this QR code to access our e-book.





# Uniform

- Sensible clothing that safe to climb in (no tutus or party dresses).
- Sensible shoes that children can climb and run in.
- Barnes sweatshirt.
- Book bag.







# Communication with the Nursery Team



## Door

On the door everyday  
for very quick  
exchange of  
information e.g. if  
someone might be  
picking up.

## Email

We are **not** desk based.

We would rather arrange  
**face to face meetings** rather  
than exchange lengthy emails.

Please email **both Nursery  
teachers**.

If **urgent**, please ring the  
main school number.

## Reporting on Progress

Autumn term and Spring  
term parent consultations.

Settling in comment in  
the first half term.

End of year report.

Tapestry.



# Curriculum Evening

In the first half term in September or October.  
More details about what we teach and how we teach it.  
Information on how you can be involved.



# PTFA

Parents & friends   
**YOUR HELP IS  
NEEDED!**

**Please support our school financially** so that it can continue to deliver an exceptional education to each child.

## PTFA CONTRIBUTION SINCE SEPTEMBER 2022



**HOW MUCH DOES THE  
PTFA NEED TO RAISE?**

**£20 PER CHILD PER MONTH  
WOULD GENERATE £120K  
FOR THE SCHOOL EACH YEAR**

## Where do my donations go?

Last year the PTFA contributed funds to the school across the following categories:

### SPECIALIST STAFF

- Art, language, music and PE teachers
- Teaching Assistants

### PLAYGROUND IMPROVEMENTS

- KS1 construction blocks
- KS1 sandpit • EYFS playground games, toys and roleplay sets

### RESOURCES

- ICT equipment • Musical instruments and lessons • Books and Kindles
- Creative resources and crafts • Netball posts and equipment • Storage facilities

### INFRASTRUCTURE UPGRADES

- LED lighting
- Classroom improvements



*Thank you  
for your  
help! ♥*

[justgiving.com/barnesprimaryschoolptfa](https://justgiving.com/barnesprimaryschoolptfa)



# PTFA

## SOME EXAMPLES OF WHAT YOUR GENEROUS DONATIONS TO THE PTFA CAN MAKE HAPPEN:





# Junior Adventures Group Barnes Primary School



We Are JAG | Junior Adventures Group UK



www.youtube.com - to exit full screen, press **Esc**

Play (k)



0:00 / 1:35

Scroll for details  
v





# Our Values: Make us who we are!



## **Be Considerate**

Show care for others and the world around us



## **Be Passionate**

Love what we do and inspire others



## **Be Trustworthy**

We are role models with great responsibility



## **Leave a Positive Legacy**

Create brighter futures for all



# JAG



# TIMETABLES

Nursery:

Breakfast/RTS :

Monday – Friday 07:45 – 08:45

After School club/SAP

Monday – Thursday 15:20 – 18:00

Friday 15:20 – 17:20

Reception – Year 6 :

Breakfast/RTS

Monday – Friday 07:45 – 08:50

After School club/SAP

Monday – Friday 15:15 – 18:15



# Snack Time

## Rise then Shine Buffet



## Stay and Play Buffet





# Our Junior Adventures Team

Junior Adventures group



Mr. Mo



Miss Enya



Miss Jade



Mr. Riceo



Miss Ruth



Mr. Antonis



Mr. Matthew



Mr. Yousef



Miss Emilia



Contact: 03335 771533  
hello@junioradventuresgroup.co.uk



SCAN HERE TO  
FIND OUT MORE  
& BOOK NOW!



SCAN HERE TO  
FIND OUT MORE  
& BOOK NOW!





# SEND

Within our clubs, we welcome children with SEND. **Special educational needs and disabilities** (SEND) can affect a child or young person's ability to learn. This can affect their:

- Behavior or ability to socialise, for example they struggle to make friends
- Reading and writing, for example because they have dyslexia
- Ability to understand things
- Concentration levels, for example because they have attention deficit hyperactivity disorder (ADHD)
- Physical ability

It is vital that we ensure our clubs are as inclusive as possible to accommodate to the needs of our children. Junior Adventures Group, now carry out SEND assessments with each child's parents, setting staff and school partners to better understand the support required for each SEND child. We kindly ask if you require support regarding a child attending your setting with, SEND needs or require specific resources Please contact:

**[SENDCO@junioradventuresgroup.co.uk](mailto:SENDCO@junioradventuresgroup.co.uk)**

# Thank you

## Q & A







# Nursery Tour



Please try some of our amazing food from our wonderful catering team.

Please feel free to speak to any one of us during the rest of the evening.

Thank you.

