

Key Vocabulary

Analogue and Digital Clocks

12-hour time

24-hour time

Roman numerals

analogue

digital

hours

minutes

seconds

o'clock

half past

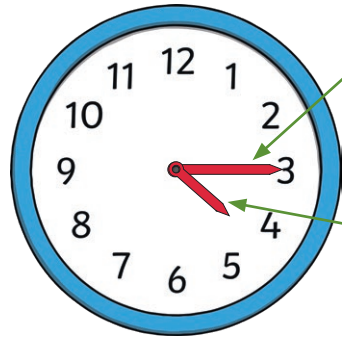
quarter past

quarter to

midday

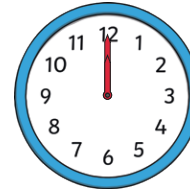
midnight

noon

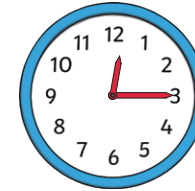


Minute Hand
The long hand points to the minutes past the hour.

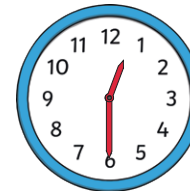
Hour Hand
The short hand points to the hour. If this hand is pointing between the hours, it is the earlier hour.



twelve o'clock



quarter past twelve



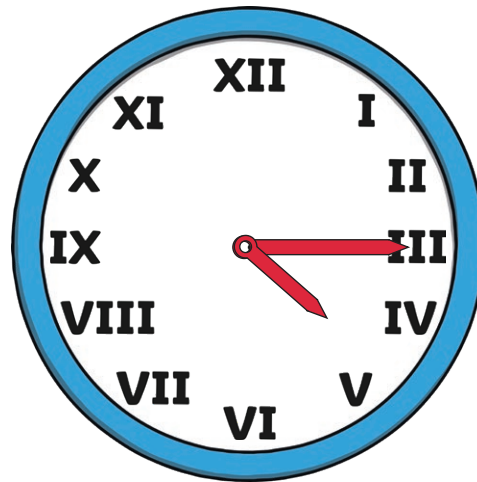
half past twelve



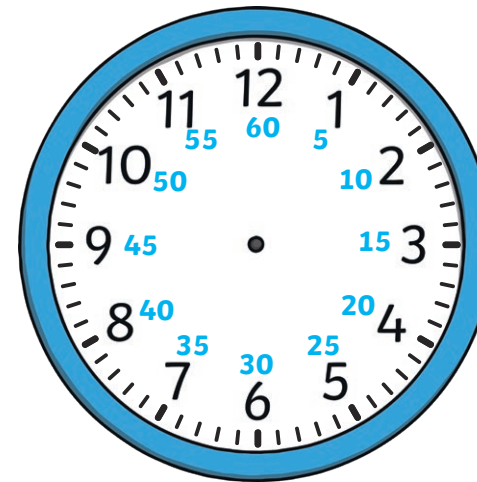
quarter to one

Time and Roman Numerals

Hours, Minutes and Seconds



There are **60 seconds** in an minute.



There are **60 minutes** in an hour.

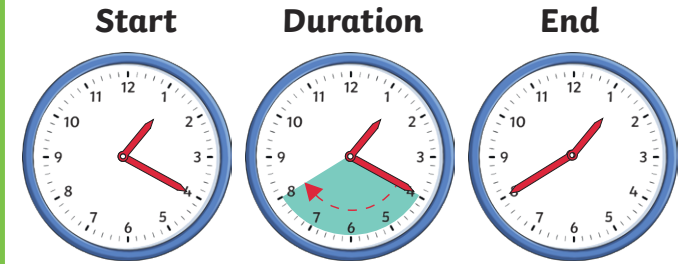
24-Hour Time

Calculate Durations of Time

There are 24 hours in a day.



| | | | | |
|--|-------|---------|------------|--|
| | 13:00 | 1 p.m. | 1 o'clock | |
| | 14:00 | 2 p.m. | 2 o'clock | |
| | 15:00 | 3 p.m. | 3 o'clock | |
| | 16:00 | 4 p.m. | 4 o'clock | |
| | 17:00 | 5 p.m. | 5 o'clock | |
| | 18:00 | 6 p.m. | 6 o'clock | |
| | 19:00 | 7 p.m. | 7 o'clock | |
| | 20:00 | 8 p.m. | 8 o'clock | |
| | 21:00 | 9 p.m. | 9 o'clock | |
| | 22:00 | 10 p.m. | 10 o'clock | |
| | 23:00 | 11 p.m. | 11 o'clock | |
| | 00:00 | 12 a.m. | 12 o'clock | |



20 minutes has passed.

Compare Durations of Time

Compare the time using the vocabulary 'longer' and 'shorter'.

| | | |
|-------------|-----------------|------------|
| 180 seconds | is the same as | 3 minutes. |
| 90 minutes | is shorter than | 2 hours. |
| 48 hours | is longer than | 1 day. |