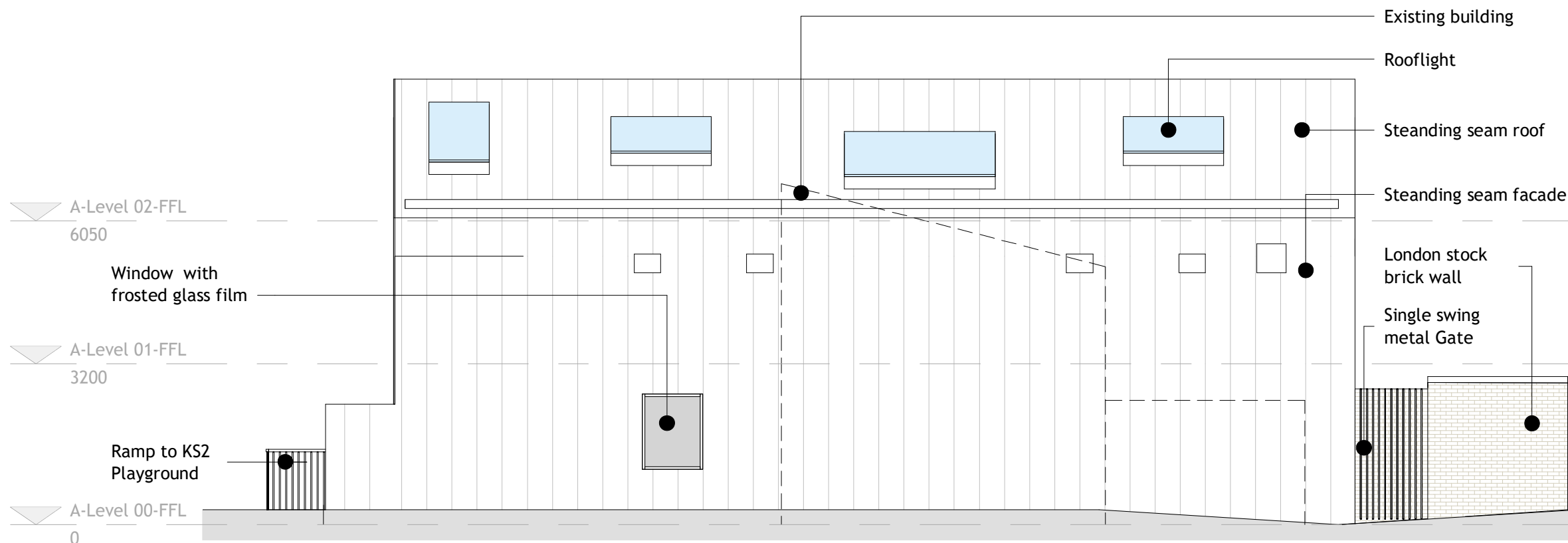
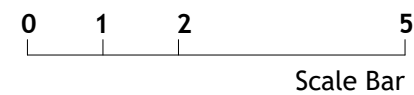


**1** Rear Elevation (NE)  
1 : 100



**2** Flank Elevation (NW)  
1 : 100



Revision	Amendment	Date
P4	Issue for Stage Approval	19/10/20
P3	Issue for comments	02/10/20
P2	Issue for review + comments	30/09/20
P1	Issue for comments	16/09/20

Revision	Amendment	Date
C1	AK	MB
Drawn by	Reviewed by	Approved by
61020	16/09/20	1 : 100 @ A3
WCB Number	Date Created	Scale of A1

**McBains**

McBains Ltd  
5th Fl, 26 Finsbury Square London EC2A 1DS  
+44 (0)20 7786 7900 mcbains.co.uk

Client  
LONDON BOROUGH OF RICHMOND UPON THAMES

Project  
BARNES PRIMARY SCHOOL  
32 CROSS STREET  
BARNES, LONDON, SW13 0QQ

Drawing Title  
ELEVATIONS  
SHEET 2

ARCHITECTURE						
Project	Originator	Zone	Level	Type	Discipline	Number
LOND01	MCB	XX	ZZ	DR	A	0121
						S4 - P4
Project	Originator	Zone	Level	Type	Discipline	Number

BIM Transmittal Disclaimer  
McBains Ltd makes no express or implied warranties with respect to the character, function, or capabilities of the data (inclusive of 3rd party data incorporated within), or the suitability of the data for any particular purpose beyond those originally intended by McBains Ltd. please refer to our standard terms and conditions for further details.