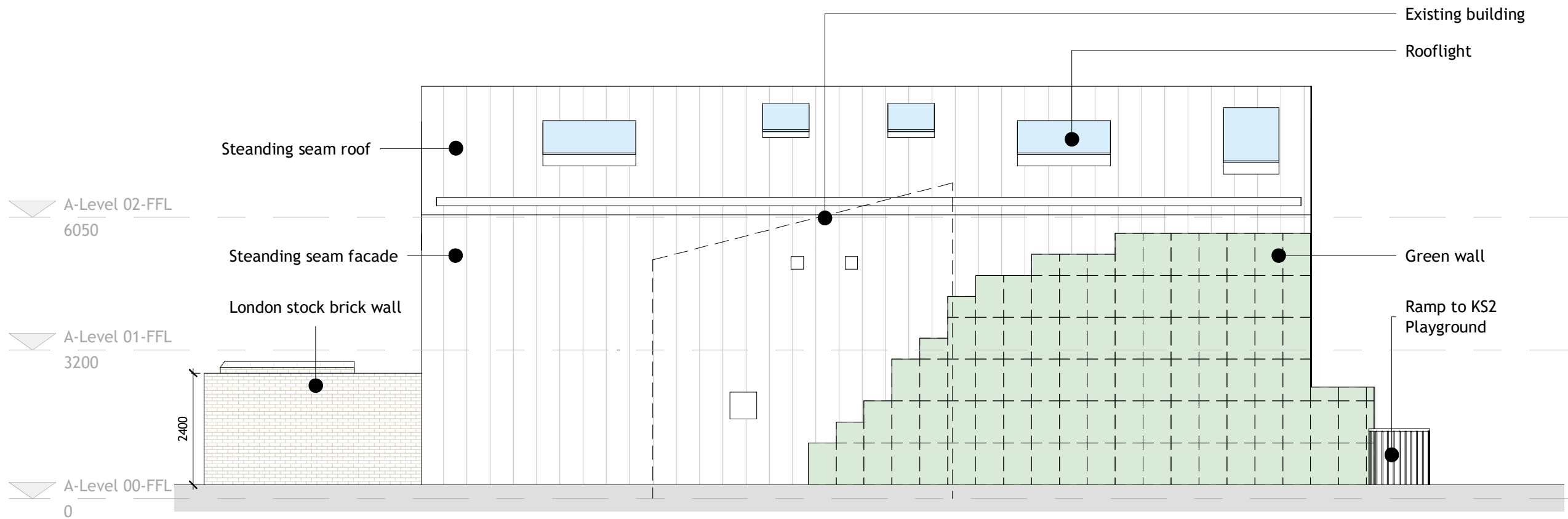
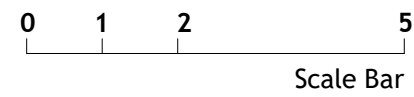




1 Cross St. / Front Elevation (SW)
1 : 100



2 Flank Elevation (SE)
1 : 100



Revision	Amendment	Date
P4	Issue for Stage Approval	19/10/20
P3	Issue for comments	02/10/20
P2	Issue for review + comments	30/09/20
P1	Issue for comments	16/09/20

Drawn by	Reviewed by	Approved by
TW	LF	AK

MCB Number	Date Created	Scale of A1
61020	16/09/20	1 : 100 @ A3

McBains
 McBains Ltd
 5th Fl, 26 Finsbury Square London EC2A 1DS
 +44 (0)20 7786 7900 mcBains.co.uk

Client
 LONDON BOROUGH OF RICHMOND UPON THAMES

Project
 BARNES PRIMARY SCHOOL
 32 CROSS STREET
 BARNES, LONDON, SW13 0QQ

Drawing Title
 ELEVATIONS
 SHEET 1

ARCHITECTURE									
Drawing / Document Reference									Status
LOND01	MCB	XX	ZZ	DR	A	0120	S4	P4	
Project	Originator	Zone	Level	Type	Discipline	Number	Suitability	Revision	

BIM Transmittal Disclaimer
 McBains Ltd makes no express or implied warranties with respect to the character, function, or capabilities of the data (inclusive of 3rd party data incorporated within), or the suitability of the data for any particular purpose beyond those originally intended by McBains Ltd. please refer to our standard terms and conditions for further details.