

Lower Key Stage 2

The importance of a smooth transition

New building

Unfamiliar staff

New routines

More independence

We want the children to feel prepared and excited about these changes.

Transition Events

- Show Yr 2 a video of Yr 3 children talking about their experiences
- Yr 2 teachers to introduce Yr 3 teachers through lessons - e.g. "The Mr Beadon Challenge"
- Yr 3 teachers to dismiss their new class in Yr 2 classroom
- Transition evening and tour
- Yr 2 & 3 buddy system
- Half class swap - 15 Yr 3 children swap with 15 Yr 2 children
- Yr 2 to have lunch (including 'soup and sandwich') and spend lunchtime in KS2
- Whole class school swap afternoon
- Handover meeting with Yr 2 and Yr 3 teachers
- Transition booklet to be sent home at end of summer term

Don't forget to look at our Twitter feed for transition events this term!

#BPSKSI

The Year 3 Area



The Year 3 Entrance



The doors to the Year 3 shared area will open at 8:45. The doors will then close at 8:55 so that the teacher can get back to the class to take the register.

If you are running late please go to the office so that they can update the register.

The Year 3 Scooters



The Year 3 scooters are stored next to the Year 3 and music classrooms.

Please drop your child's scooter off there first before coming via the normal Year 3 entrance.

First day in Year 3

- Reminders will be sent home during the last week of the summer term
- There will be clear signs to show the children and parents where to go
- An adult will help children and parents on the first morning
- There will be a coffee morning for parents on the first Monday back
- There will be lots of tweets so you can see what the children are up to and how well they are settling

What are you looking forward to?

Our timetable

What is your favourite subject?

3GP Autumn Term Timetable

Day	8.15-9.00	9.00-10.00	10.00-10.15	10.15-11.15	11.15-11.30	11.30-12.15	12.15-12.30	1.15-2.15	2.15-3.15
M	REGISTRATION	Music (Karen)	Outdoor PE (Brian)	Spelling test New spellings	Assembly (Annie)	Richmond Park			
T		Maths	English	Literacy Activities		Richmond Park			
W		Maths	English	Literacy Activities	Enrichment (Sue)	Philosophy	Disruptive activity		
T		Maths	English	Literacy Activities	English	Mental Maths			
F		ICT or PE	Shop, Mail	Science	Science	2.05-3.20 WHOLE SCHOOL CERTIFICATE ASSEMBLY KSL			

Lesson one:

- match up names with faces
- asking questions about the map/familiarise
- walk to e.g. hall, plotting route on map as we go
- repeat with e.g. cloakrooms
- plenary: children to write down questions about the map to quiz a friend on a whiteboard

Lesson two:

- match up faces with where they teach
- ch to ask the class questions about the map
- model marking a route
- mark various routes and symbols for e.g. toilets

Lesson three

- colour code areas on an A4 version for books, e.g. classrooms, offices, corridors, quiet shared areas

LUNCH TIME!

How do we line up for lunch?
How do we walk to lunch?
Which playground do we play in at lunch time?
How do we line up once lunch time has finished?

Go in first and go in early for the first week
Teachers go too.

Similar to Y2 - timings of breaks etc all the same.

★ BREAK TIME

How do we line up at play time?
How do we walk out of the building?
Which playground do we go to at play time?
CLIMBERS
How do we line up when it is time to go back into the classroom?
Do we make noise in the shared area?
Remind Miss Panter it is her playground duty please!

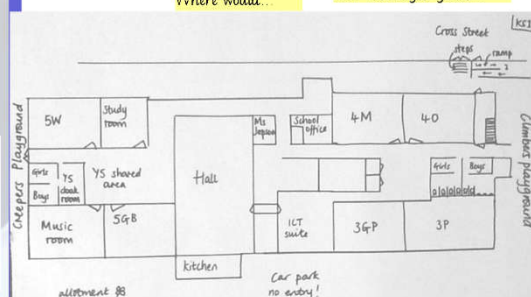
Playground shared with only Y4 and playground is near Y3 - bring own snack on 1st day.

First week back

What can you tell me about this map?

Show me...
How many...
Where is...
Where would...

What is next to...
What is the furthest...
How would you get to...



Getting to know Key Stage Two
Lesson One

It can be intimidating being in a new place, with so much to learn. It is too!

Let's familiarise ourselves with:

- who the teachers are in KS2
- where different places are in the building

Subtle changes that happen in Y3

Communication

Daily, weekly and termly



Spelling

New spelling folder.
Spellings linked to handwriting
Y3 High Frequency Words
Same approach as KS1.



Reading

Expectation to read every night continues
New style of reading journal to be phased in



Times Tables



Harry



Home learning

- Same style letter but addressed to the child
- The English home learning book is blue
- The mathematics home learning book is green
- We usually alternate the home learning - English one week and maths the next. With the occasional theme or extended home learning project.
- We kindly ask if you would purchase the grammar and punctuation CGP books and times table practise books at the start of term to aid the children in consolidating their learning at home.

This will all be explained clearly again on a Parent Mail at the start of term.

Highlights



Richmond Park

Outdoor learning



London CLC

Romans

Book making

Year 3
highlights

Carol concert

DT - salads

Arts Week and Solve a
Problem Week!

Stone Age

Greek production

Rivers

Year 4
highlights

Evacuee Day

Morse Code
Machines

Arts Week